

# Shareholding Structure of the Company (As of December 31, 2020)

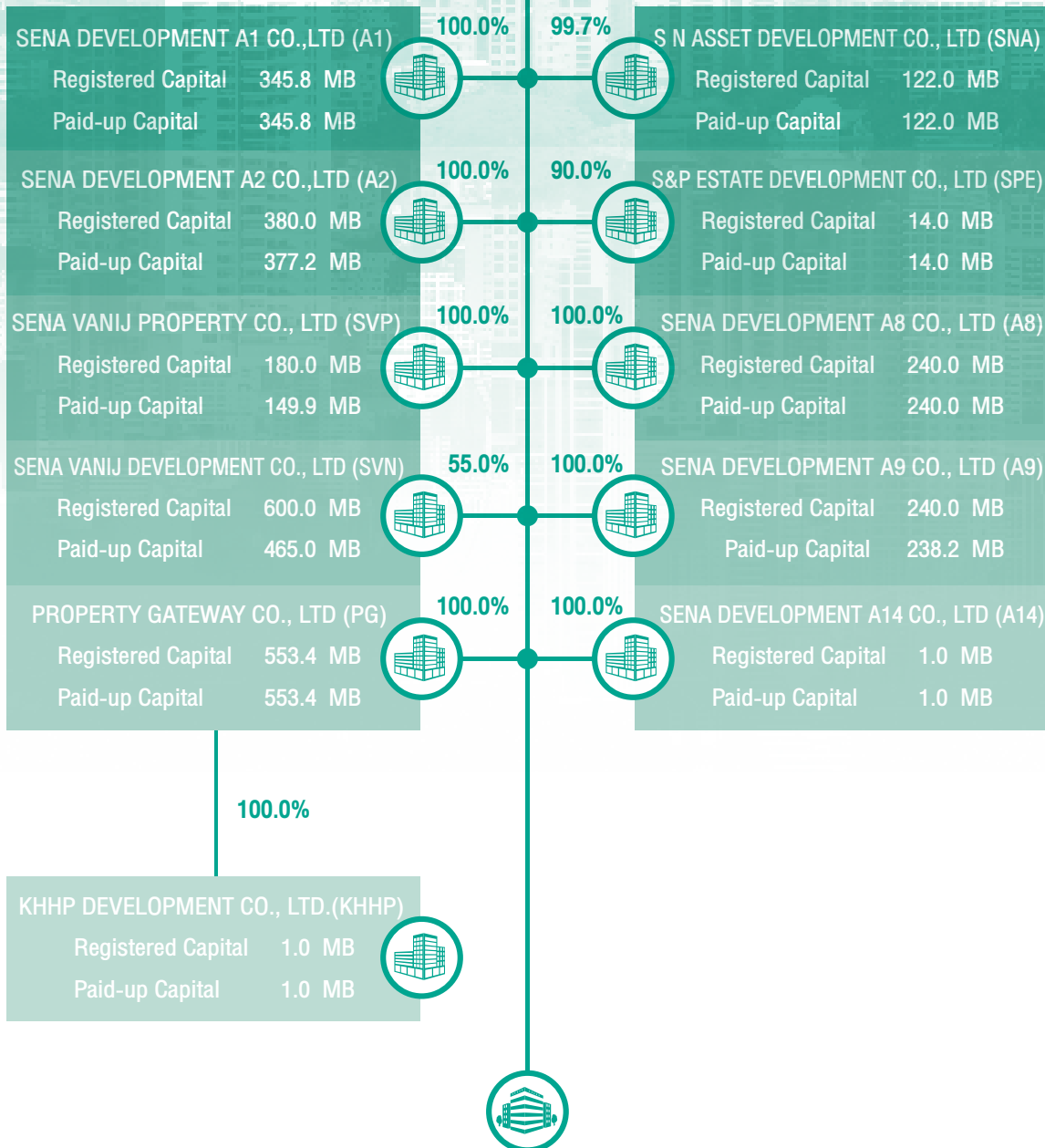
## SENA DEVELOPMENT PLC. Group

(\_\_\_\_\_namely subsidiaries and indirect subsidiaries company,-----namely Joint Venture and subsidiaries company of the joint venture)

1. Direct Subsidiary and Indirect Subsidiary (SENA DEVELOPMENT PLC.)  
(Property Group)

### SENA DEVELOPMENT PUBLIC COMPANY LIMITED (SENA)

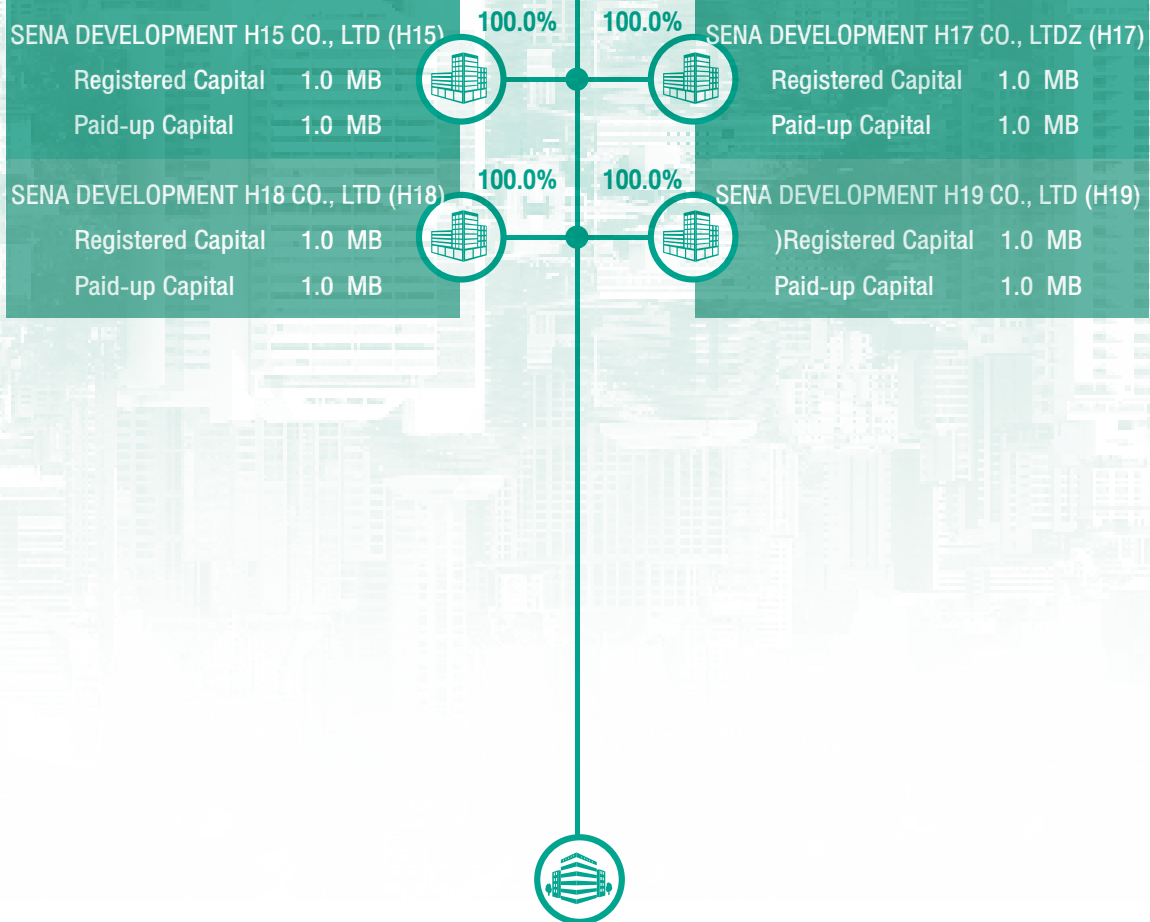
Registered Capital 1,447.9 MB  
Paid-up Capital 1,423.7 MB



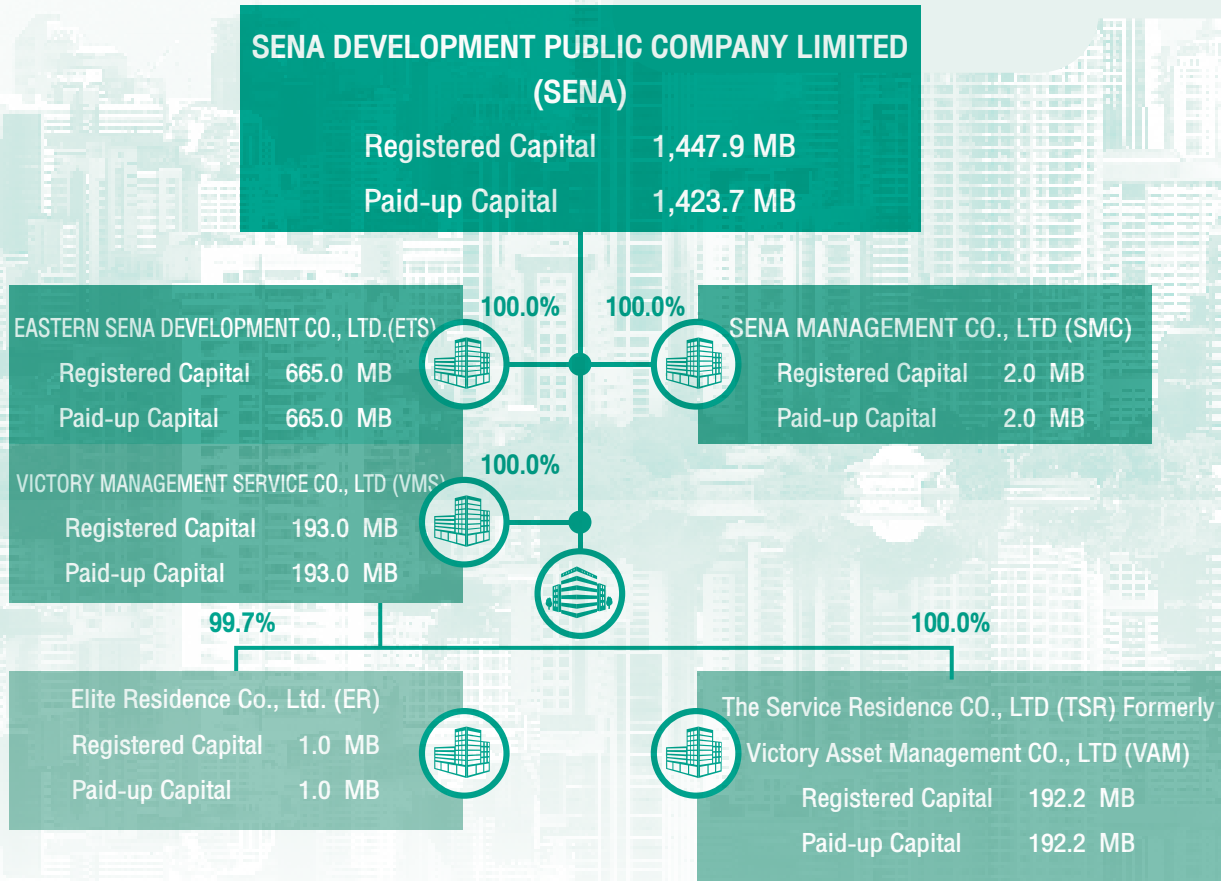
1. Direct Subsidiary and Indirect Subsidiary (SENA DEVELOPMENT PLC.)  
(Property Group)

**SENA DEVELOPMENT PUBLIC COMPANY LIMITED  
(SENA)**

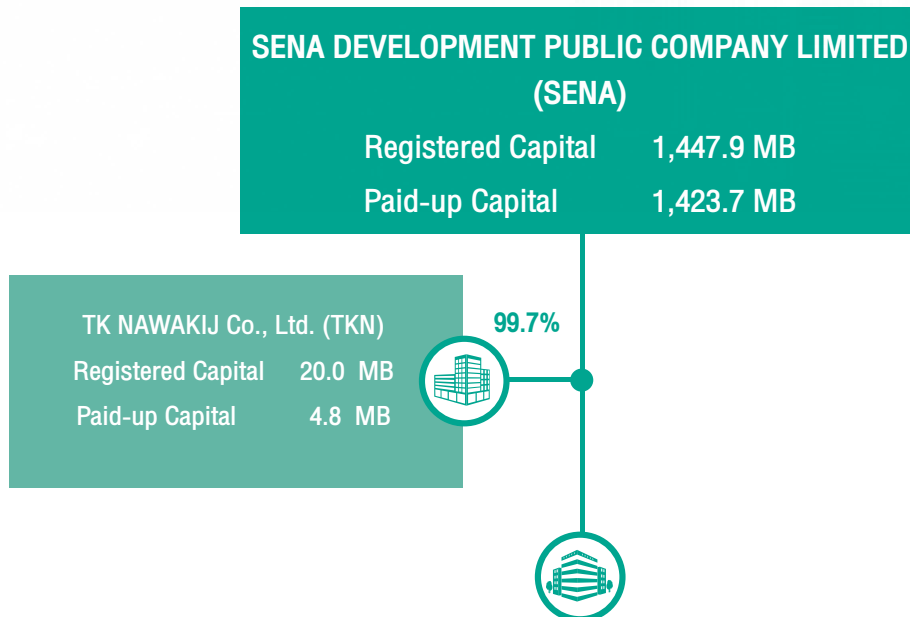
Registered Capital 1,447.9 MB  
Paid-up Capital 1,423.7 MB



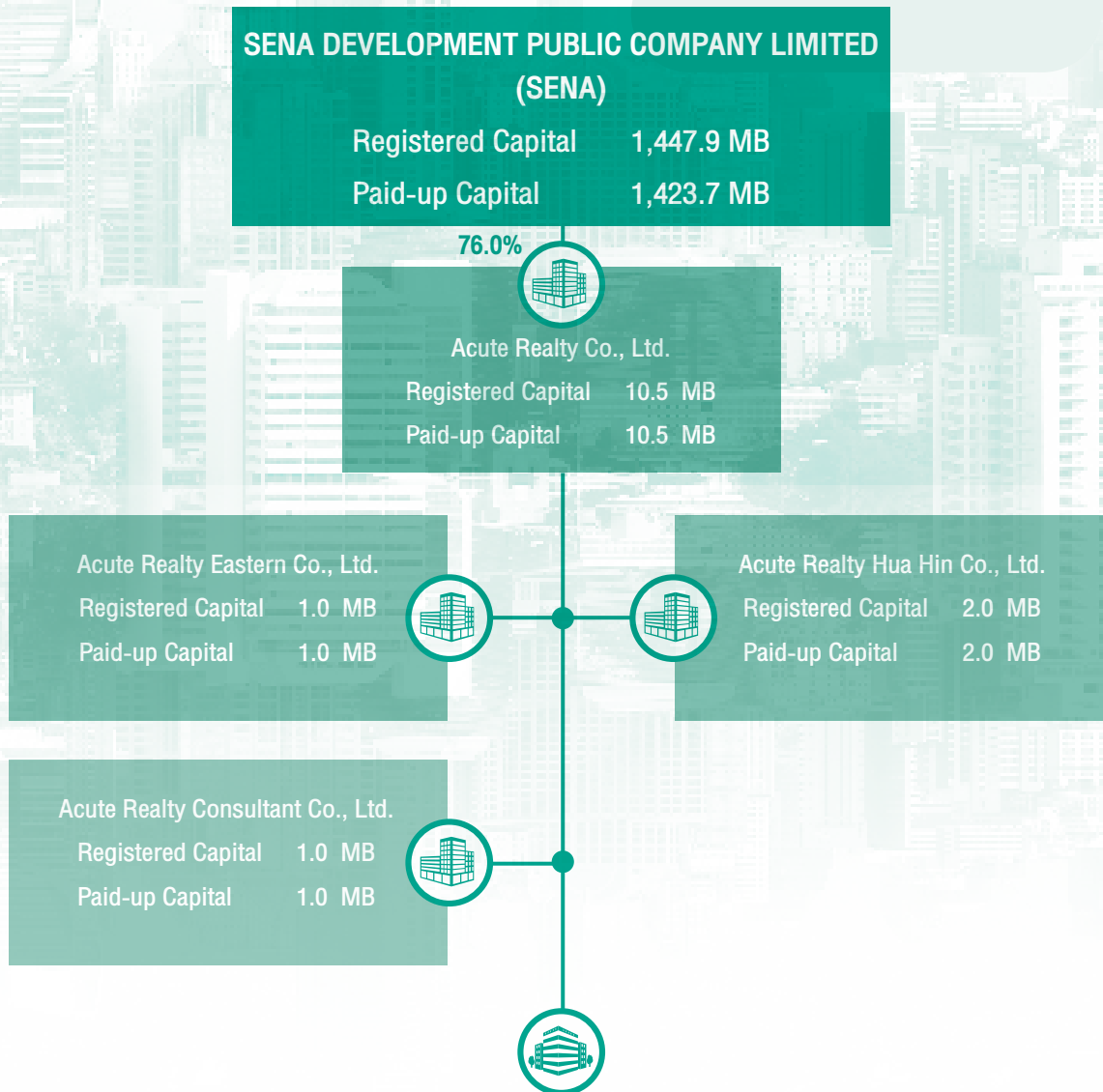
2. Direct Subsidiary and Indirect Subsidiary ( SENA DEVELOPMENT PLC.)  
(The rental and services business Group)



3. Direct Subsidiary ( SENA DEVELOPMENT PLC.) (Construction Business Group)



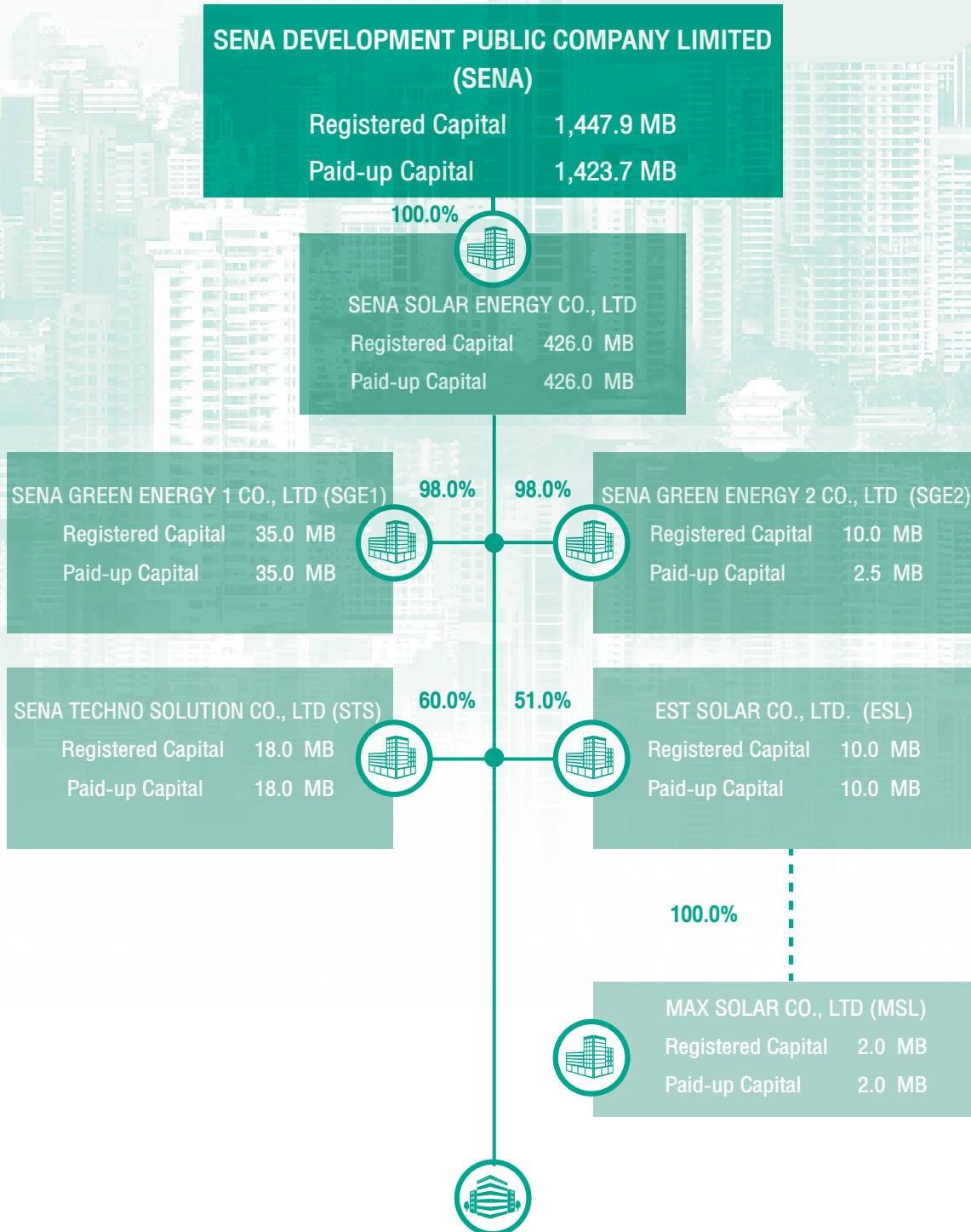
4. Direct subsidiaries and Indirect subsidiaries (SENA DEVELOPMENT PLC.)  
(Broker group)



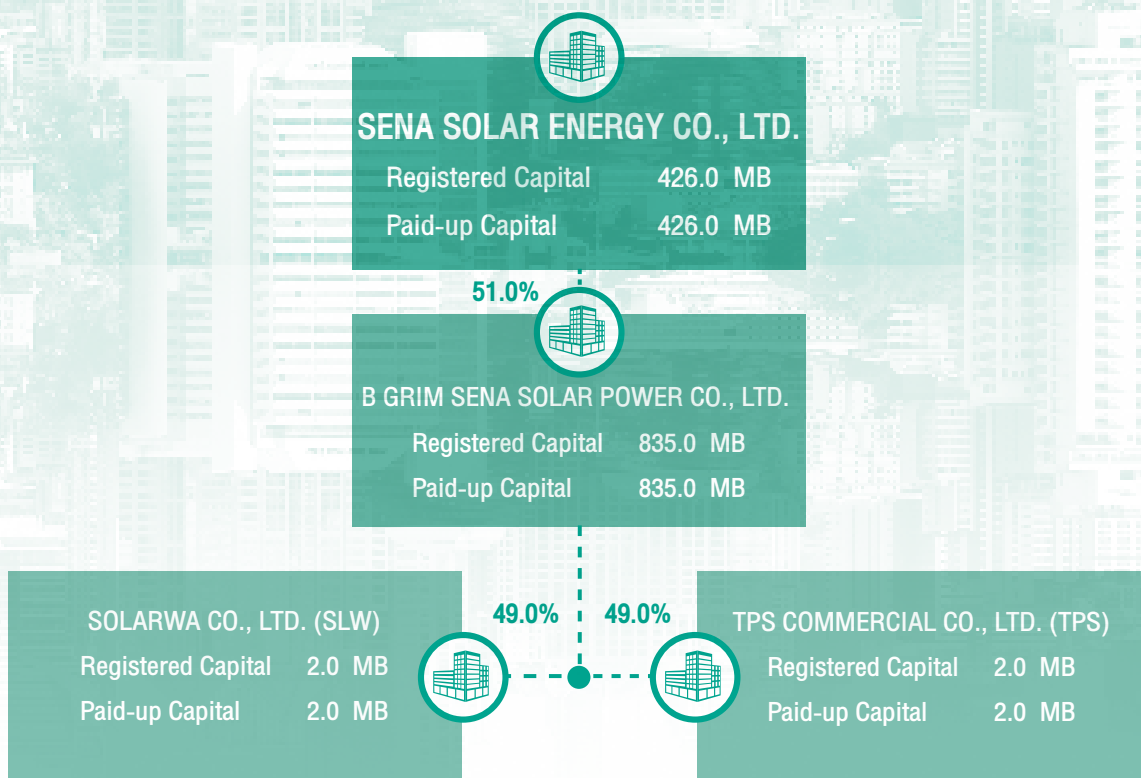
Remark : Acute Realty Co., Ltd. has joint control power through the 3 directors as follows:

1. Acute Realty Eastern Co., Ltd.
2. Acute Realty Consultant Co., Ltd.
3. Acute Realty Hua Hin Co., Ltd.

5. Direct subsidiaries and Indirect subsidiaries (SENA DEVELOPMENT PLC.)  
(Solar Group)



5.1 Joint Venture Of the Direc Subsidiary (SENA SOLAR ENERGY CO., LTD)



**Remark :** Financial Statement B GRIM CO., LTD. Recognized 97% equity interest,  
 SENA SOLAR CO., LTD. Recognized



6. Joint Venture Company SENA DEVELOPMENT PLC.

**SENA DEVELOPMENT PUBLIC COMPANY LIMITED (SENA)**

Registered Capital 1,447.9 MB  
Paid-up Capital 1,423.7 MB

